

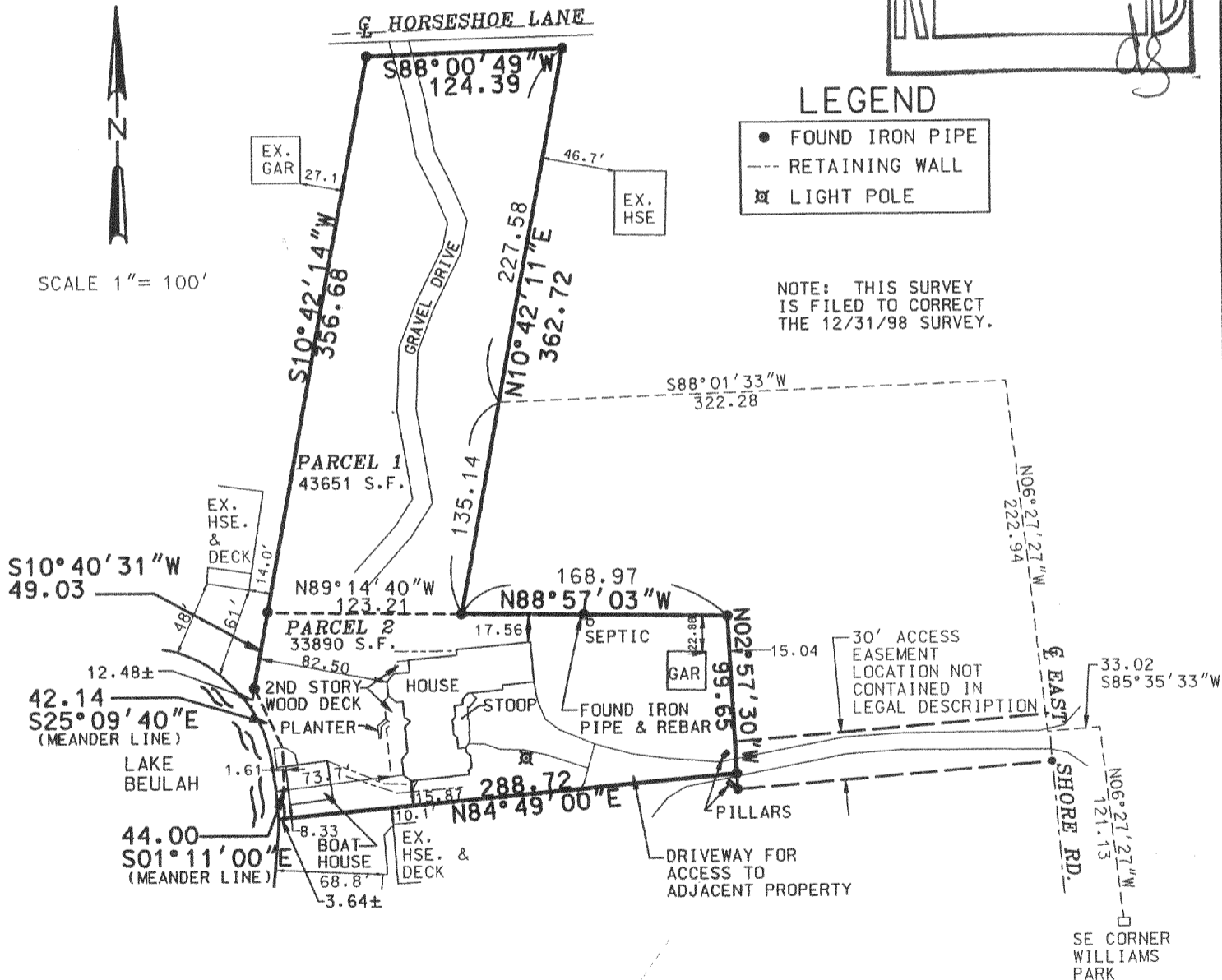
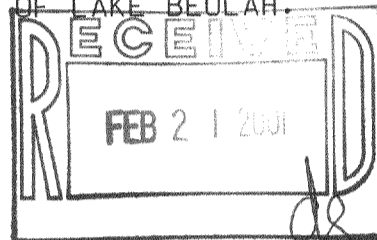
PLAT OF SURVEY

RSV ENGINEERING, INC
ENGINEERS, PLANNERS, SURVEYORS
CONSTRUCTION MANAGERS
ENVIRONMENTAL SCIENTISTS
801 MAIN STREET, MUKWONAGO, WISCONSIN 53149 (414) 363-2004

FOR: DAVE SCHMIDT REALTY

REV.: 1/9/01
DATE: 12/31/98

DESCRIPTION: BEING A PARCEL OF LAND LOCATED IN THE NE¹/₄ OF SECTION 7, TOWNSHIP 4 NORTH, RANGE 18 EAST, TOWN OF EAST TROY, WALWORTH COUNTY, WISCONSIN BEING MORE COMPLETELY DESCRIBED AS FOLLOWS: COMMENCING AT THE SE CORNER OF WILLIAMS PARK THENCE N06°27'27"W, A DISTANCE OF 121.13' TO A POINT; THENCE S85°35'33"W, A DISTANCE OF 33.02' TO A POINT; THENCE N06°27'27"W, A DISTANCE OF 222.94' TO A POINT; THENCE S88°01'33"W, A DISTANCE OF 322.28' TO THE POINT OF BEGINNING; THENCE N10°42'11"E, A DISTANCE OF 362.72' TO A POINT; THENCE S88°00'49"W, A DISTANCE OF 124.39' TO A POINT; THENCE S10°42'14"W, A DISTANCE OF 356.68' TO A POINT; THENCE S10°40'31"W, A DISTANCE OF 49.03' TO AN IRON PIPE; THENCE WITH THE MEANDER LINE S25°09'40"E, A DISTANCE OF 42.14' TO A POINT; THENCE WITH THE MEANDER LINE S01°11'00"E, A DISTANCE OF 44.00' TO A POINT; THENCE N84°49'00"E, A DISTANCE OF 288.72' TO A POINT; THENCE N02°57'30"W, A DISTANCE OF 99.65' TO A POINT; THENCE N88°57'03"W, A DISTANCE OF 168.97' TO A POINT; THENCE N10°42'11"E, A DISTANCE OF 135.14' TO THE POINT OF BEGINNING. ALSO INCLUDING LANDS BETWEEN MEANDER LINE AND THE SHORE LINE OF LAKE BEULAH, SAID PARCEL CONTAINING 1.78 ACRES MORE OR LESS.

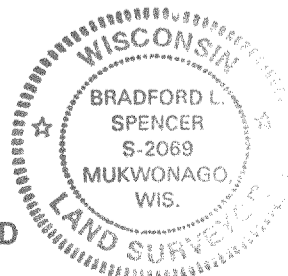


THE ABOVE MAP IS A TRUE REPRESENTATION THEREOF AND SHOWS THE SIZE AND LOCATION OF ALL THE PROPERTY, EXTERIOR BOUNDARIES, THE LOCATION OF ALL VISIBLE BOUNDARY FENCES, APPARENT EASEMENTS, ROADWAYS AND VISIBLE ENCROACHMENTS, IF ANY.

THIS SURVEY IS MADE FOR THE USE OF THE PRESENT OWNERS OF THE PROPERTY, AND ALSO THOSE WHO PURCHASE, MORTGAGE OR GUARANTEE TITLE THERETO WITHIN ONE (1) YEAR FROM DATE HERETO.

BRADFORD L. SPENCER, R.L.S. 2069
RSV# 98075.DGN

THIS IS ORIGINAL
PRINT ONLY IF
SEAL IS IMPRINTED
IN RED



PWP-15F
PWP-2

418-1448